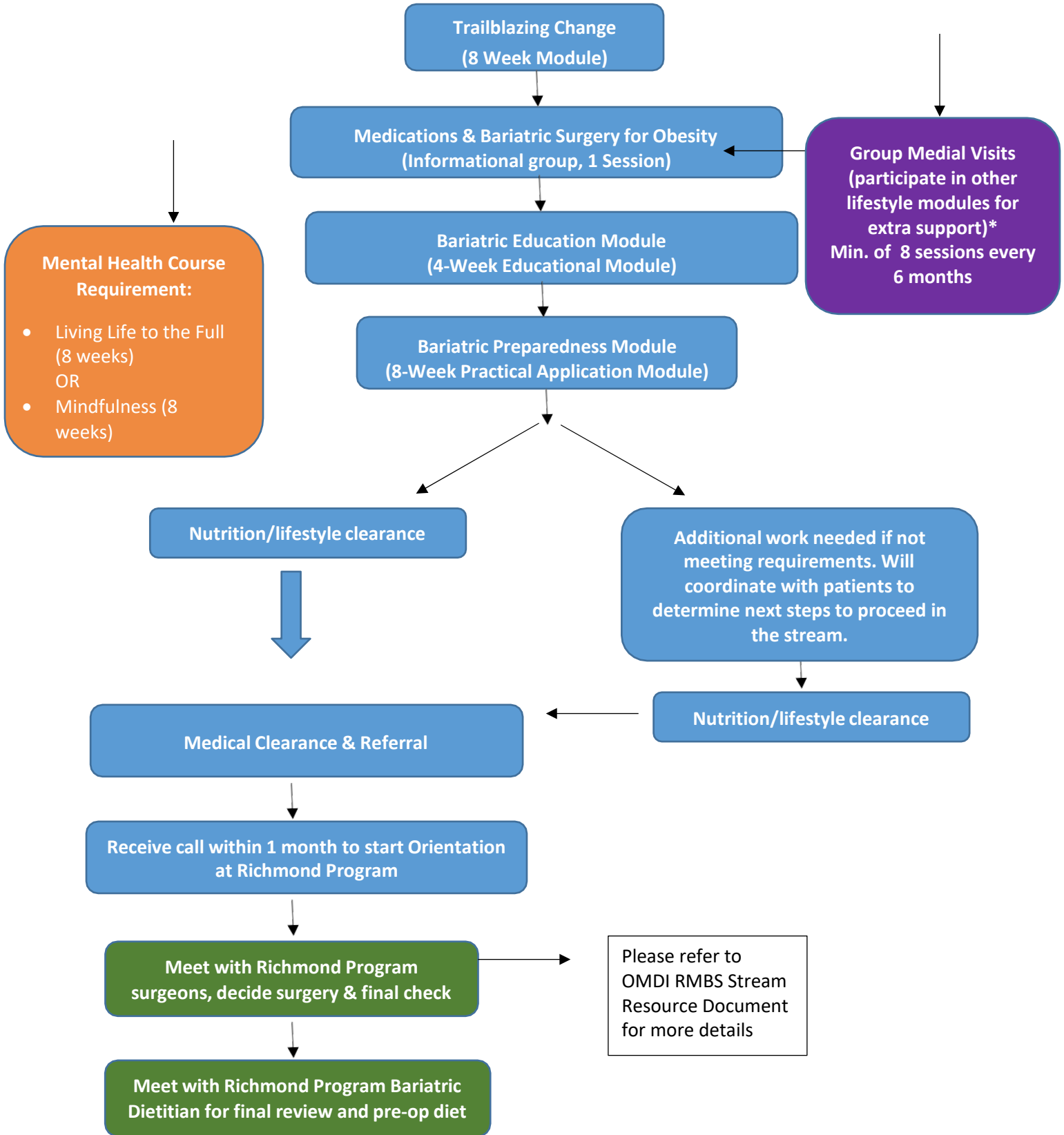


# BARIATRIC PROGRAM

(Preparing for bariatric sx tentative timeline)



\*The Bariatric curriculum will be offered to patients similar to a university semester system. There will be 3 offerings per year (e.g Fall/Winter, Winter/Spring, Spring/Summer).

## Post-Bariatric Follow-up Visits

(Providing quality post-op care)

